

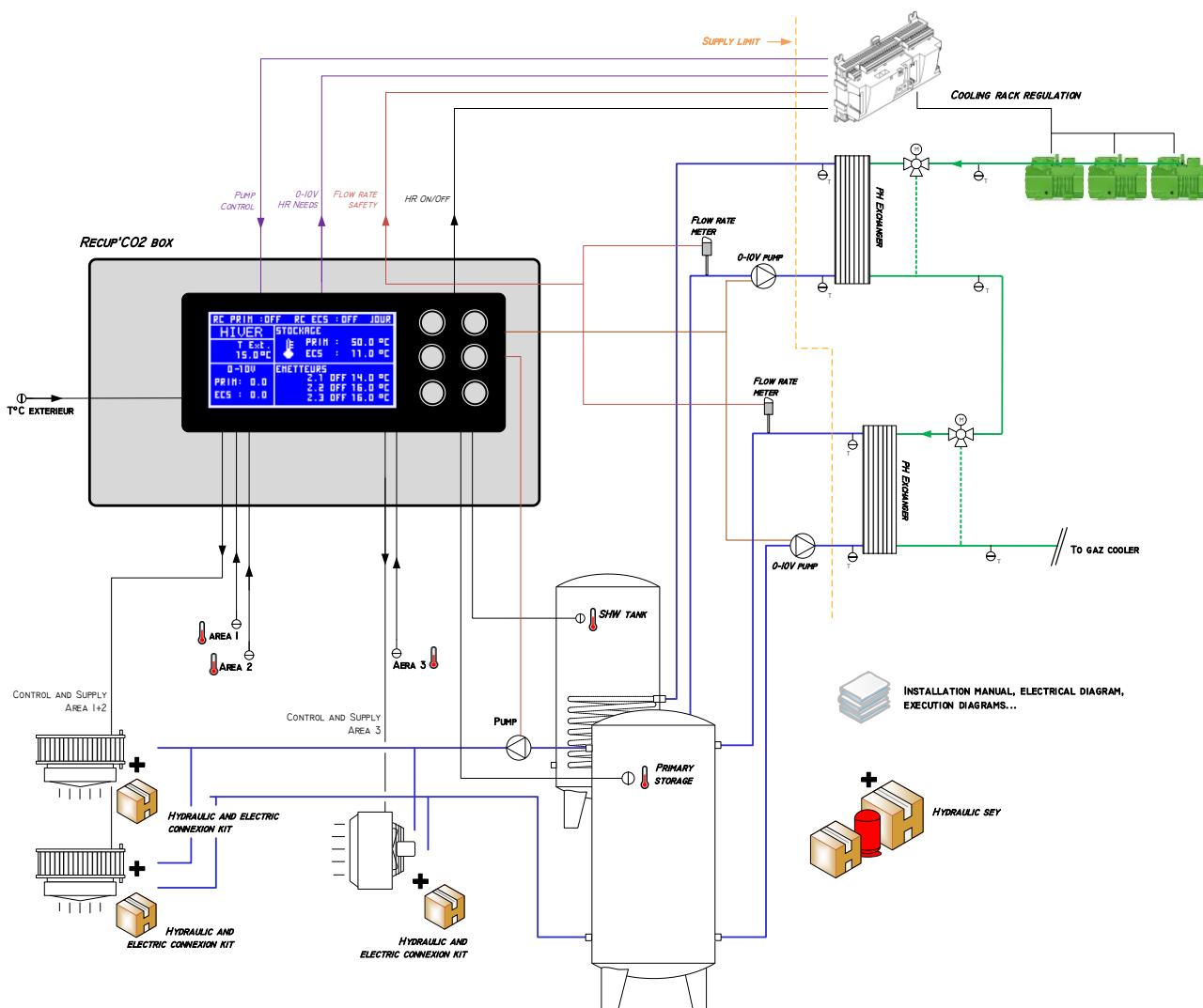
• **RECUP'CO2**

Custom-made solution for CO2 transcritical plants based on a complete and adapted supply:

- A pre-wired metal box designed for interface needs between the CO2 refrigeration plant (s) pre-equipped with heat exchanger by the manufacturer.
- Variable speed pump(s) (0-10V) adapted to DHW / Heating heat recovery needs.
- Electronic flow controller (s) recommended by the manufacturers of CO2 plants to avoid the overheating risk of the recovery circuits.
- PT1000 probes to assess to the heating or the DHW requirements of the installation.

Depending on the project, RECUP'CO2 can be supplemented by other references from the Boostherm range such as DHW or Primary water tanks, air heaters and associated accessories such as hydraulic connection kits.

Electrical box delivered with a complete technical file including the assembly plans of the various components and the correspondences between the terminal blocks of the refrigeration unit cabinet and the RECUP'CO2 box.



➤ **Consult us to perform sizings and layout studies.**